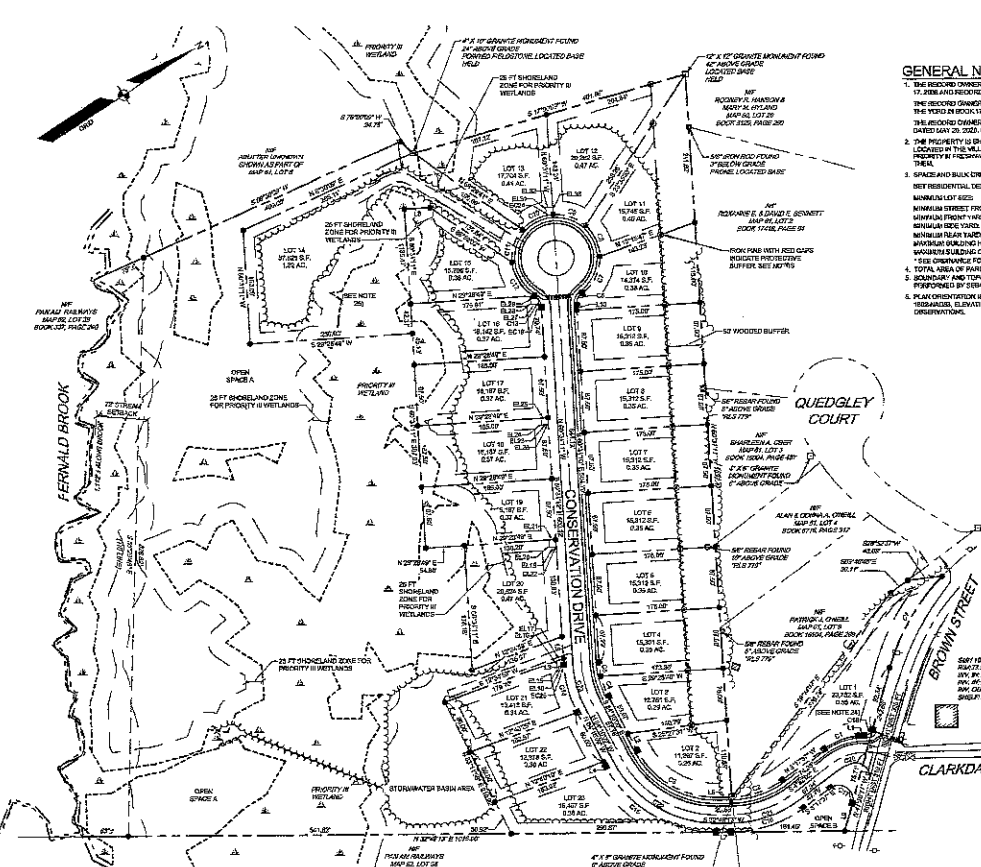


CURVE	LENGTH	RADIUS	CRD. BEARING	CRD. DIST.
C1	10.12	10.12	0° 00' 00" E	10.12
C2	72.28	120.00	0° 11' 52" E	72.87
C3	127.47	120.00	0° 46' 22" E	128.87
C4	11.32	120.00	0° 77' 04" E	11.32
C5	28.07	120.00	0° 55' 11" E	28.07
C6	18.84	22.50	0° 34' 29" E	18.84
C7	61.27	62.50	0° 31' 24" E	61.27
C8	60.07	62.50	0° 34' 22" E	60.07
C9	60.07	62.50	0° 37' 23" E	60.07
C10	60.07	62.50	0° 40' 24" E	60.07
C11	60.07	62.50	0° 43' 25" E	60.07
C12	60.07	62.50	0° 46' 26" E	60.07
C13	60.07	62.50	0° 49' 27" E	60.07
C14	60.07	62.50	0° 52' 28" E	60.07
C15	60.07	62.50	0° 55' 29" E	60.07
C16	60.07	62.50	0° 58' 30" E	60.07
C17	60.07	62.50	0° 61' 31" E	60.07
C18	60.07	62.50	0° 64' 32" E	60.07
C19	60.07	62.50	0° 67' 33" E	60.07
C20	60.07	62.50	0° 70' 34" E	60.07
C21	60.07	62.50	0° 73' 35" E	60.07
C22	60.07	62.50	0° 76' 36" E	60.07
C23	60.07	62.50	0° 79' 37" E	60.07
C24	60.07	62.50	0° 82' 38" E	60.07
C25	60.07	62.50	0° 85' 39" E	60.07
C26	60.07	62.50	0° 88' 40" E	60.07
C27	60.07	62.50	0° 91' 41" E	60.07
C28	60.07	62.50	0° 94' 42" E	60.07
C29	60.07	62.50	0° 97' 43" E	60.07
C30	60.07	62.50	0° 100' 44" E	60.07
C31	60.07	62.50	0° 103' 45" E	60.07
C32	60.07	62.50	0° 106' 46" E	60.07
C33	60.07	62.50	0° 109' 47" E	60.07
C34	60.07	62.50	0° 112' 48" E	60.07
C35	60.07	62.50	0° 115' 49" E	60.07
C36	60.07	62.50	0° 118' 50" E	60.07
C37	60.07	62.50	0° 121' 51" E	60.07
C38	60.07	62.50	0° 124' 52" E	60.07
C39	60.07	62.50	0° 127' 53" E	60.07
C40	60.07	62.50	0° 130' 54" E	60.07
C41	60.07	62.50	0° 133' 55" E	60.07
C42	60.07	62.50	0° 136' 56" E	60.07
C43	60.07	62.50	0° 139' 57" E	60.07
C44	60.07	62.50	0° 142' 58" E	60.07
C45	60.07	62.50	0° 145' 59" E	60.07
C46	60.07	62.50	0° 148' 00" E	60.07
C47	60.07	62.50	0° 151' 01" E	60.07
C48	60.07	62.50	0° 154' 02" E	60.07
C49	60.07	62.50	0° 157' 03" E	60.07
C50	60.07	62.50	0° 160' 04" E	60.07
C51	60.07	62.50	0° 163' 05" E	60.07
C52	60.07	62.50	0° 166' 06" E	60.07
C53	60.07	62.50	0° 169' 07" E	60.07
C54	60.07	62.50	0° 172' 08" E	60.07
C55	60.07	62.50	0° 175' 09" E	60.07
C56	60.07	62.50	0° 178' 10" E	60.07
C57	60.07	62.50	0° 181' 11" E	60.07
C58	60.07	62.50	0° 184' 12" E	60.07
C59	60.07	62.50	0° 187' 13" E	60.07
C60	60.07	62.50	0° 190' 14" E	60.07
C61	60.07	62.50	0° 193' 15" E	60.07
C62	60.07	62.50	0° 196' 16" E	60.07
C63	60.07	62.50	0° 199' 17" E	60.07
C64	60.07	62.50	0° 202' 18" E	60.07
C65	60.07	62.50	0° 205' 19" E	60.07
C66	60.07	62.50	0° 208' 20" E	60.07
C67	60.07	62.50	0° 211' 21" E	60.07
C68	60.07	62.50	0° 214' 22" E	60.07
C69	60.07	62.50	0° 217' 23" E	60.07
C70	60.07	62.50	0° 220' 24" E	60.07
C71	60.07	62.50	0° 223' 25" E	60.07
C72	60.07	62.50	0° 226' 26" E	60.07
C73	60.07	62.50	0° 229' 27" E	60.07
C74	60.07	62.50	0° 232' 28" E	60.07
C75	60.07	62.50	0° 235' 29" E	60.07
C76	60.07	62.50	0° 238' 30" E	60.07
C77	60.07	62.50	0° 241' 31" E	60.07
C78	60.07	62.50	0° 244' 32" E	60.07
C79	60.07	62.50	0° 247' 33" E	60.07
C80	60.07	62.50	0° 250' 34" E	60.07
C81	60.07	62.50	0° 253' 35" E	60.07
C82	60.07	62.50	0° 256' 36" E	60.07
C83	60.07	62.50	0° 259' 37" E	60.07
C84	60.07	62.50	0° 262' 38" E	60.07
C85	60.07	62.50	0° 265' 39" E	60.07
C86	60.07	62.50	0° 268' 40" E	60.07
C87	60.07	62.50	0° 271' 41" E	60.07
C88	60.07	62.50	0° 274' 42" E	60.07
C89	60.07	62.50	0° 277' 43" E	60.07
C90	60.07	62.50	0° 280' 44" E	60.07
C91	60.07	62.50	0° 283' 45" E	60.07
C92	60.07	62.50	0° 286' 46" E	60.07
C93	60.07	62.50	0° 289' 47" E	60.07
C94	60.07	62.50	0° 292' 48" E	60.07
C95	60.07	62.50	0° 295' 49" E	60.07
C96	60.07	62.50	0° 298' 50" E	60.07
C97	60.07	62.50	0° 301' 51" E	60.07
C98	60.07	62.50	0° 304' 52" E	60.07
C99	60.07	62.50	0° 307' 53" E	60.07
C100	60.07	62.50	0° 310' 54" E	60.07

LINE	DIRECTION	DISTANCE
L1	N 89° 52' 00" E	8.19
L2	S 81° 30' 00" E	27.10
L3	N 60° 11' 14" W	8.32
L4	N 84° 10' 00" W	2.42
L5	N 89° 52' 00" W	23.29
L6	N 00° 00' 00" W	20.00
L7	S 32° 04' 12" W	20.00
L8	S 89° 28' 00" W	26.42
L9	N 47° 23' 11" W	43.77
L10	S 89° 52' 00" E	7.58

CURVE	RADIUS	LENGTH	CRD. BEARING	CRD. DIST.
C1	75.00	58.84	6° 14' 02" W	49.81
C2	150.00	58.84	9° 17' 33" W	90.00
C3	150.00	114.68	9° 56' 12" W	156.77
C4	150.00	61.34	10° 22' 40" W	91.48

LOT NO.	AREA (SQ. FT.)	AREA (SQ. M.)	PERCENTAGE OF TOTAL
LOT 1	11,700.00	1,087.00	10.00%
LOT 2	11,700.00	1,087.00	10.00%
LOT 3	11,700.00	1,087.00	10.00%
LOT 4	11,700.00	1,087.00	10.00%
LOT 5	11,700.00	1,087.00	10.00%
LOT 6	11,700.00	1,087.00	10.00%
LOT 7	11,700.00	1,087.00	10.00%
LOT 8	11,700.00	1,087.00	10.00%
LOT 9	11,700.00	1,087.00	10.00%
LOT 10	11,700.00	1,087.00	10.00%
LOT 11	11,700.00	1,087.00	10.00%
LOT 12	11,700.00	1,087.00	10.00%
LOT 13	11,700.00	1,087.00	10.00%
LOT 14	11,700.00	1,087.00	10.00%
LOT 15	11,700.00	1,087.00	10.00%
LOT 16	11,700.00	1,087.00	10.00%
LOT 17	11,700.00	1,087.00	10.00%
LOT 18	11,700.00	1,087.00	10.00%
LOT 19	11,700.00	1,087.00	10.00%
LOT 20	11,700.00	1,087.00	10.00%
LOT 21	11,700.00	1,087.00	10.00%
LOT 22	11,700.00	1,087.00	10.00%
LOT 23	11,700.00	1,087.00	10.00%
LOT 24	11,700.00	1,087.00	10.00%
LOT 25	11,700.00	1,087.00	10.00%
LOT 26	11,700.00	1,087.00	10.00%
LOT 27	11,700.00	1,087.00	10.00%
LOT 28	11,700.00	1,087.00	10.00%
LOT 29	11,700.00	1,087.00	10.00%
LOT 30	11,700.00	1,087.00	10.00%
LOT 31	11,700.00	1,087.00	10.00%
LOT 32	11,700.00	1,087.00	10.00%
LOT 33	11,700.00	1,087.00	10.00%
LOT 34	11,700.00	1,087.00	10.00%
LOT 35	11,700.00	1,087.00	10.00%
LOT 36	11,700.00	1,087.00	10.00%
LOT 37	11,700.00	1,087.00	10.00%
LOT 38	11,700.00	1,087.00	10.00%
LOT 39	11,700.00	1,087.00	10.00%
LOT 40	11,700.00	1,087.00	10.00%
LOT 41	11,700.00	1,087.00	10.00%
LOT 42	11,700.00	1,087.00	10.00%
LOT 43	11,700.00	1,087.00	10.00%
LOT 44	11,700.00	1,087.00	10.00%
LOT 45	11,700.00	1,087.00	10.00%
LOT 46	11,700.00	1,087.00	10.00%
LOT 47	11,700.00	1,087.00	10.00%
LOT 48	11,700.00	1,087.00	10.00%
LOT 49	11,700.00	1,087.00	10.00%
LOT 50	11,700.00	1,087.00	10.00%



CURVE	LENGTH	RADIUS	CRD. BEARING	CRD. DIST.
C1	10.12	10.12	0° 00' 00" E	10.12
C2	72.28	120.00	0° 11' 52" E	72.87
C3	127.47	120.00	0° 46' 22" E	128.87
C4	11.32	120.00	0° 77' 04" E	11.32
C5	28.07	120.00	0° 55' 11" E	28.07
C6	18.84	22.50	0° 34' 29" E	18.84
C7	61.27	62.50	0° 31' 24" E	61.27
C8	60.07	62.50	0° 34' 22" E	60.07
C9	60.07	62.50	0° 37' 23" E	60.07
C10	60.07	62.50	0° 40' 24" E	60.07
C11	60.07	62.50	0° 43' 25" E	60.07
C12	60.07	62.50	0° 46' 26" E	60.07
C13	60.07	62.50	0° 49' 27" E	60.07
C14	60.07	62.50	0° 52' 28" E	60.07
C15	60.07	62.50	0° 55' 29" E	60.07
C16	60.07	62.50	0° 58' 30" E	60.07
C17	60.07	62.50	0° 61' 31" E	60.07
C18	60.07	62.50	0° 64' 32" E	60.07
C19	60.07	62.50	0° 67' 33" E	60.07
C20	60.07	62.50	0° 70' 34" E	60.07
C21	60.07	62.50	0° 73' 35" E	60.07
C22	60.07	62.50	0° 76' 36" E	60.07
C23	60.07	62.50	0° 79' 37" E	60.07
C24	60.07	62.50	0° 82' 38" E	60.07
C25	60.07	62.50	0° 85' 39" E	60.07
C26	60.07	62.50	0° 88' 40" E	60.07
C27	60.07	62.50	0° 91' 41" E	60.07
C28	60.07	62.50	0° 94' 42" E	60.07
C29	60.07	62.50	0° 97' 43" E	60.07
C30	60.07	62.50	0° 100' 44" E	60.07
C31	60.07	62.50	0° 103' 45" E	60.07
C32	60.07	62.50	0° 106' 46" E	60.07
C33	60.07	62.50	0° 109' 47" E	60.07
C34	60.07	62.50	0° 112' 48" E	60.07
C35	60.07	62.50	0° 115' 49" E	60.07
C36	60.07	62.50	0° 118' 50" E	60.07
C37	60.07	62.50	0° 121' 51" E	60.07
C38	60.07	62.50	0° 124' 52" E	60.07
C39	60.07	62.50	0° 127' 53" E	60.07
C40	60.07	62.50	0° 130' 54" E	60.07
C41	60.07	62.50	0° 133' 55" E	60.07
C42	60.07	62.50	0° 136' 56" E	60.07
C43	60.07	62.50	0° 139' 57" E	60.07
C44	60.07	62.50	0° 142' 58" E	60.07
C45	60.07	62.50	0° 145' 59" E	60.07
C46	60.07	62.50	0° 148' 00" E	60.07
C47	60.07	62.50	0° 151' 01" E	60.07